



ASSEMBLY INSTRUCTIONS

Harley-Davidson 2021-Later Sportster S
"Predator", "Sporty" Seats

SPS1, SPS2



For questions pertaining to the installation of this product,
please contact our Killer Custom technical department at info@killercustom.com.

This product is manufactured in Europe by Killer Custom

NOTE: Killer Custom assumes no responsibility or liability for damage or injury of any kind arising out of the use or misuse of any products.

1. Check all clearances before, during and after installation.
2. **Remove the OEM Seat:** Turn the motorcycle key in the lock located on the left side of the bike near the seat and lift the rear fender cowl upwards to remove it.
3. **Secure the Rear Mounting Brackets:** Attach the rear seat mounting brackets, as shown on the Fig. 1 below but do not fully tighten them yet, as their position can be adjusted. Note that for safe packing purposes these brackets can be packed separately or putted upwards.



Fig. 1

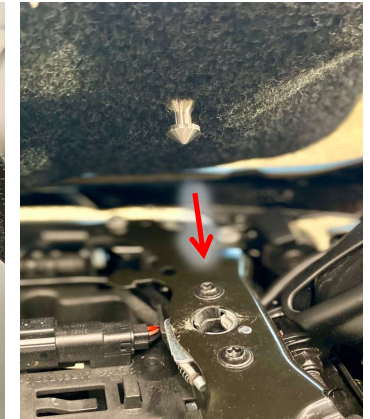


Fig. 2

4. **Position the New Seat:** Align the new seat so that the locking pin fits into the original OEM seat locking location as shown on the Fig. 2.
5. **Adjust the L-Shaped Bracket:** Adjust the L-shaped bracket so that the seat fits fully into place, then securely fasten it to the seat and the motorcycle as shown on the Fig. 3 below.



Fig. 3



Fig. 4

6. **Adjust the Upper Bracket:** Adjust the upper bracket to ensure the plastic rear fender cowl can be easily attached and aligns properly with the seat.
7. **Final Check:** Ensure everything is properly aligned and looks correct (Fig.4). Tighten all bolts securely. Enjoy your ride!

NOTE: installation of this kit requires detailed knowledge of the motorcycle model and mechanics. It is assumed that the installer has access to the proper tools and a working knowledge of them and factory service manuals.