



ASSEMBLY INSTRUCTIONS

Harley-Davidson "Avenger" Series Softail M8 Radiator Cover

STCHIN-AVG



For questions pertaining to the installation of this product, please contact our Killer Custom technical department at info@killercustom.com. This product is manufactured in Europe by Killer Custom

NOTE: Killer Custom assumes no responsibility or liability for damage or injury of any kind arising out of the use or misuse of any products.

1. Check all clearances before, during and after installation.
2. If not attached first attach the lower bracket to the spoiler as shown on the Fig. 1 below.
3. Put the included meshes on the Radiator Cover. Use hot glue or windshield adhesive to fix it. We recommend to do so than the Radiator cover is already painted.
4. Put the Radiator Cover on the motorcycle. In the top position attach the cover to the front intermediate engine mount bracket as shown on the Fig. 2 below. Screw the OEM bolting according to the HD service manuals.



Fig. 1

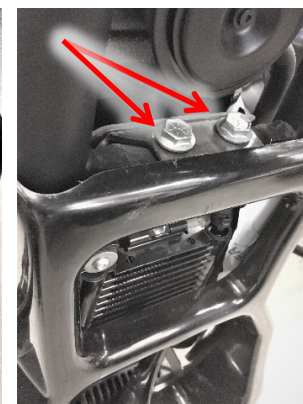


Fig. 2

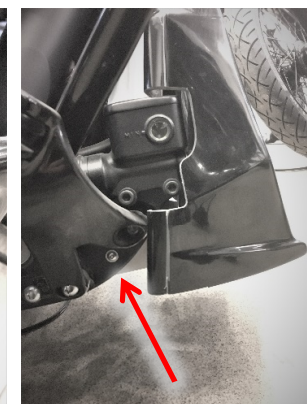


Fig. 3

5. In the lower front frame bends, there are two extra holes originally covered with clips (Fig.3). Remove the clips and use these holes to fix the bottom of the cover with the M5 screws nuts and washers. You may need to adjust the lower bracket to align the cover. The installation is finished.
6. After the installations test drive the bike to be sure everything is working perfectly.

NOTE:

- Installation of this kit requires detailed knowledge of the motorcycle model and mechanics. It is assumed that the installer has access to the proper tools and a working knowledge of them and factory service manuals.
- Before the painting the parts first you have to put those on the motorcycle and make sure that everything is adjusted and fits perfectly.
- This kit is designed to use with the original shock absorbers, but for better look you may need to use the lowering kit or air ride suspension.

WWW.KILLERCUSTOM.COM