



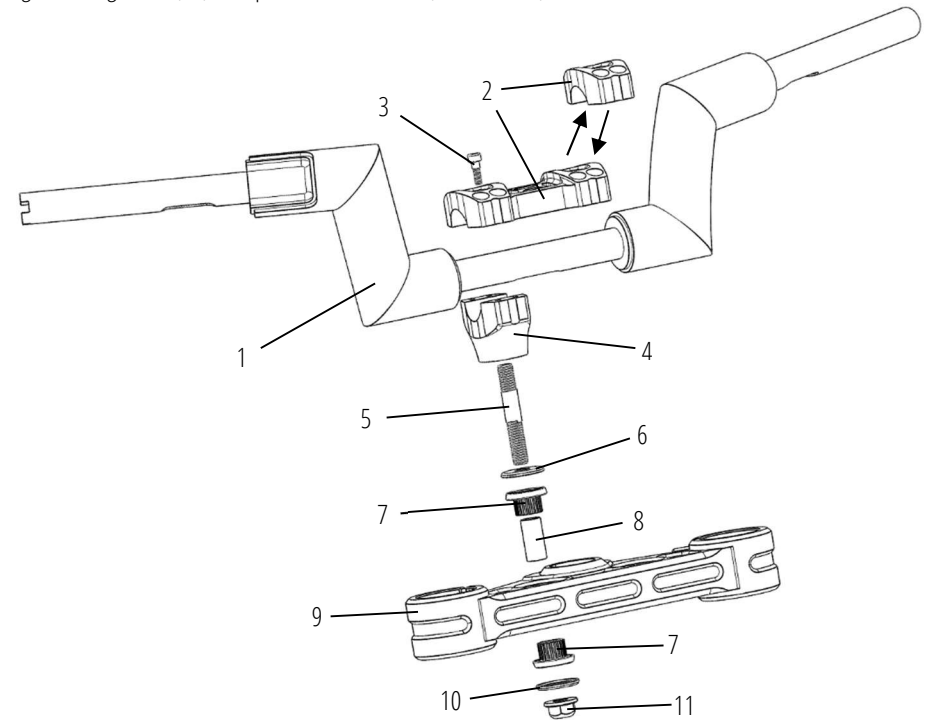
# ASSEMBLY INSTRUCTIONS

## Handlebar Riser And Clamp Kit "Task Force"

TF-25B, TF-25C,  
TF-32B, TF-32C



1. Check all clearances before, during and after installation.
2. Unmount OEM handlebars. Install bushings (7) and spacers (8), if removed.
3. Unscrew studs from OEM risers. Thread the short end of studs (5) into risers (4) until bottomed.
4. Install upper cup washers (6) on top of left and right bushings (7).
5. Insert studs in bushings and install lower cup washers (10) and flange nuts (11) loosely.
6. Center handlebar (1) in risers.
7. Place handlebars in normal riding position and hold.
8. Attach handlebar clamp (2) with handlebar clamp fasteners (4).
9. Tighten handlebar clamp fasteners just enough to maintain the handlebar position. Once the handlebar is in the right position, tighten the M6 riser clamp fasteners (3). Torque: 8.9-10.5 N·m (12–14.2 ft-lbs) Note: tighten the screws gradually and evenly so that there is an equal gap between the clamp and the riser from all sides.
10. Tighten flange nuts (11). Torque: 40.7–54.3 N·m (30–40 ft-lbs).



11. After the installation make a test drive to be sure everything is working perfectly.

### NOTE:

- Installation of this kit requires detailed knowledge of the motorcycle model and mechanics. It is assumed that the installer has access to the proper tools and a working knowledge of them and factory service manuals.

For questions pertaining to the installation of this product, please contact our Killer Custom technical department at [info@killercustom.com](mailto:info@killercustom.com). This product is manufactured in Europe by Killer Custom

**NOTE:** Killer Custom assumes no responsibility or liability for damage or injury of any kind arising out of the use or misuse of any products.

[WWW.KILLERCUSTOM.COM](http://WWW.KILLERCUSTOM.COM)